



# **Montgomery County, Maryland**

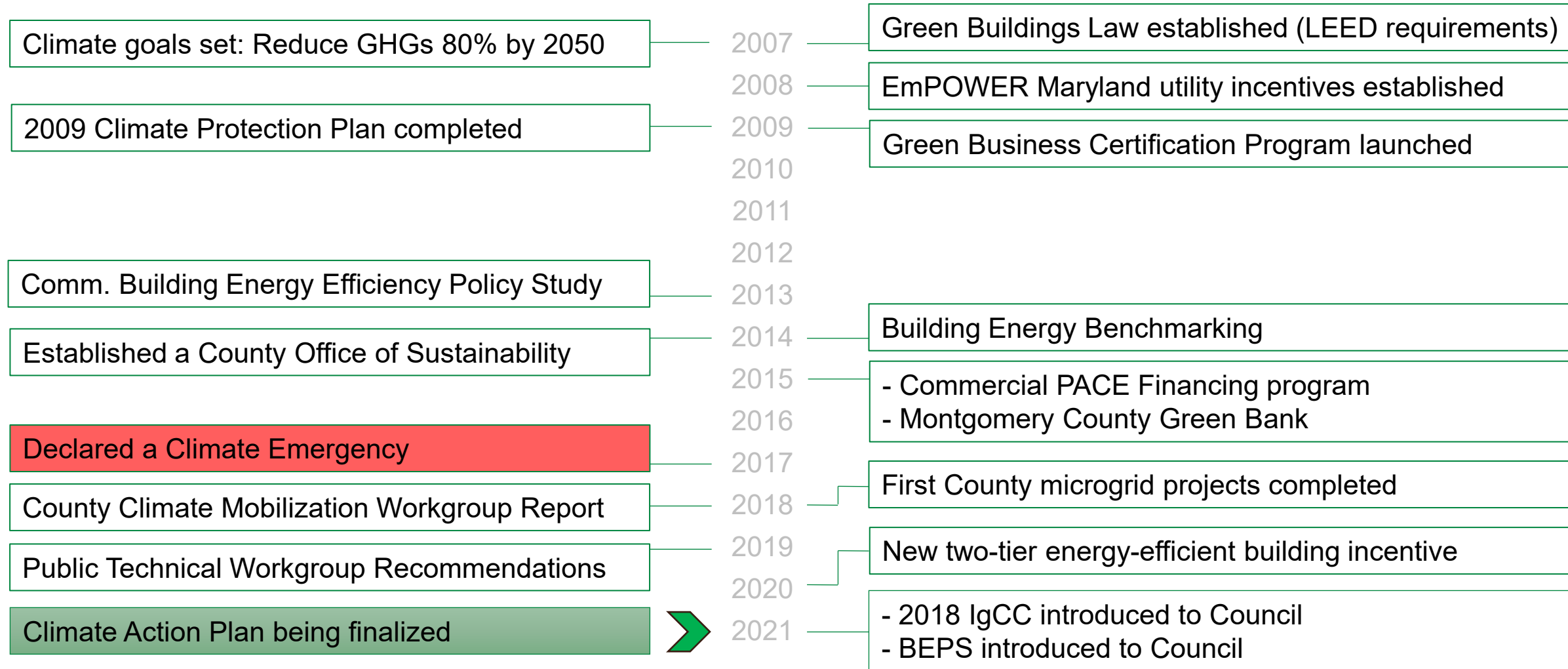
## **Climate Planning Process**

**Air & Waste Management Association**

**Baltimore-Washington Chapter**

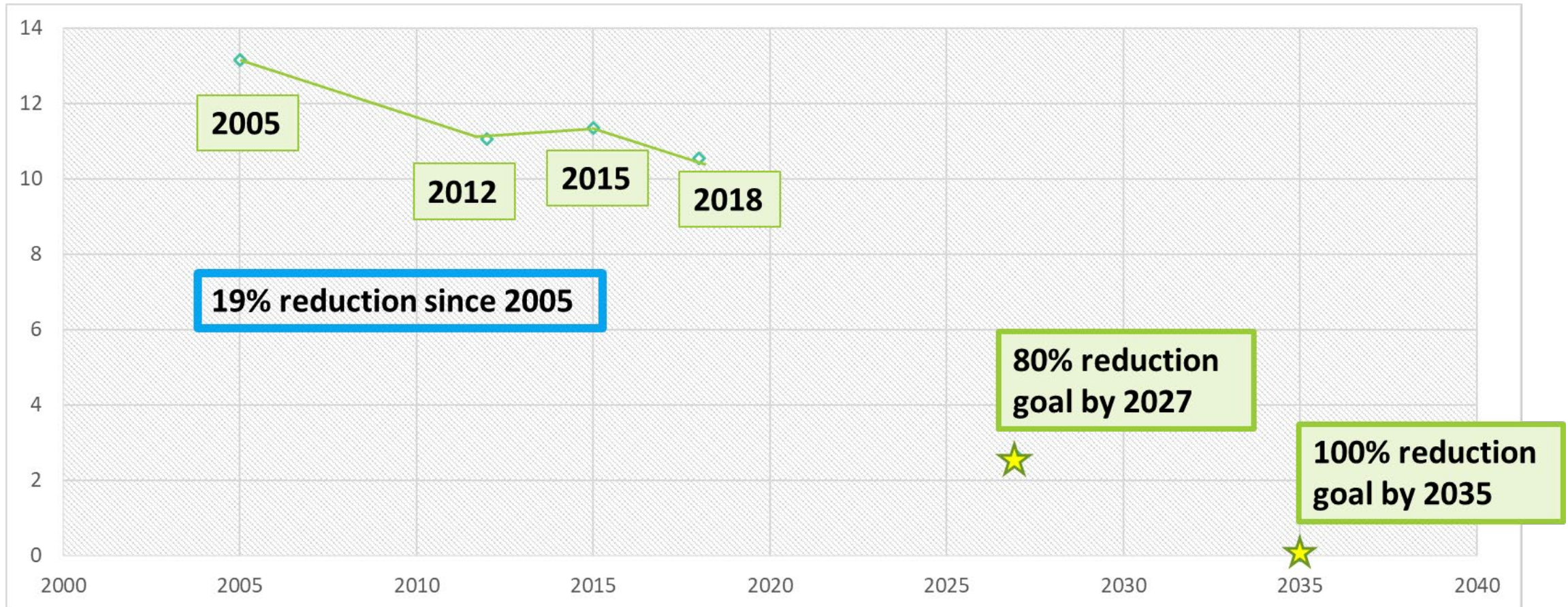
**May 27, 2021**

# Montgomery County's Climate Timeline (some highlights)



# Montgomery County's Climate Goals

- In 2017, the County Council unanimously passed a resolution declaring a climate emergency
- Emissions reduction goals of 80% by 2027 and 100% by 2035



**Source:** Metropolitan Washington Council of Governments (MWCOG) Montgomery County GHG Inventory

# Climate Planning Considerations – What should the Plan cover?



GHG Mitigation



Climate  
Adaptation



Economic  
Development



Land Use  
Planning

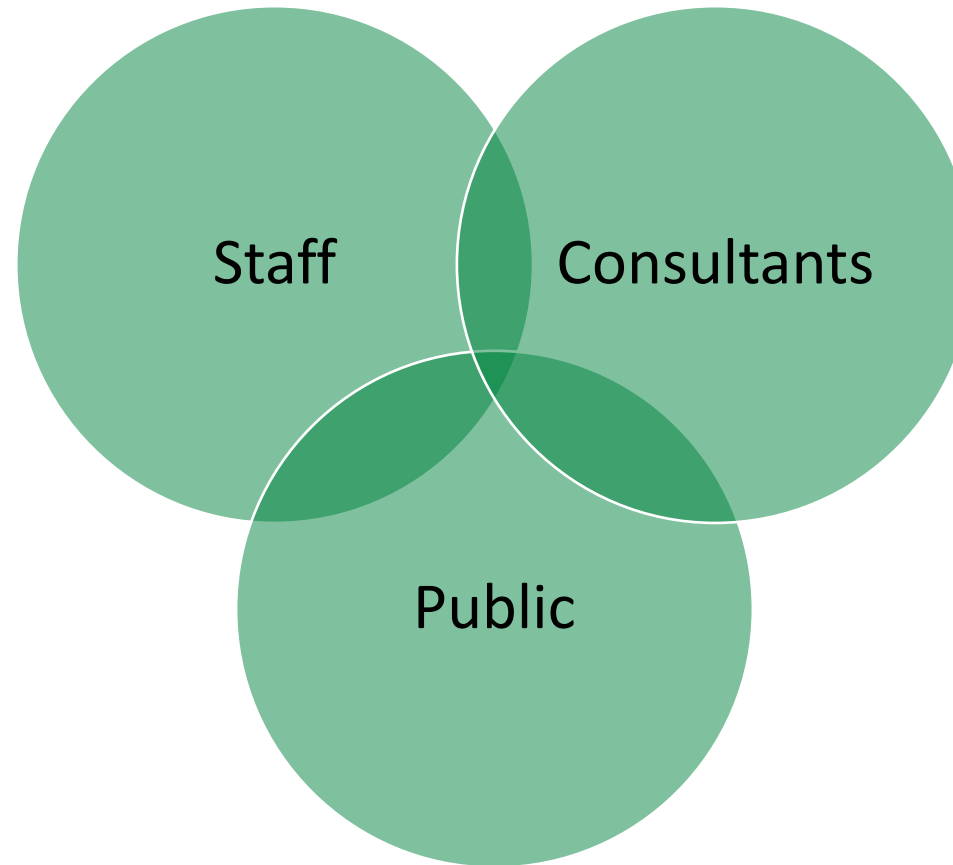


Racial Equity

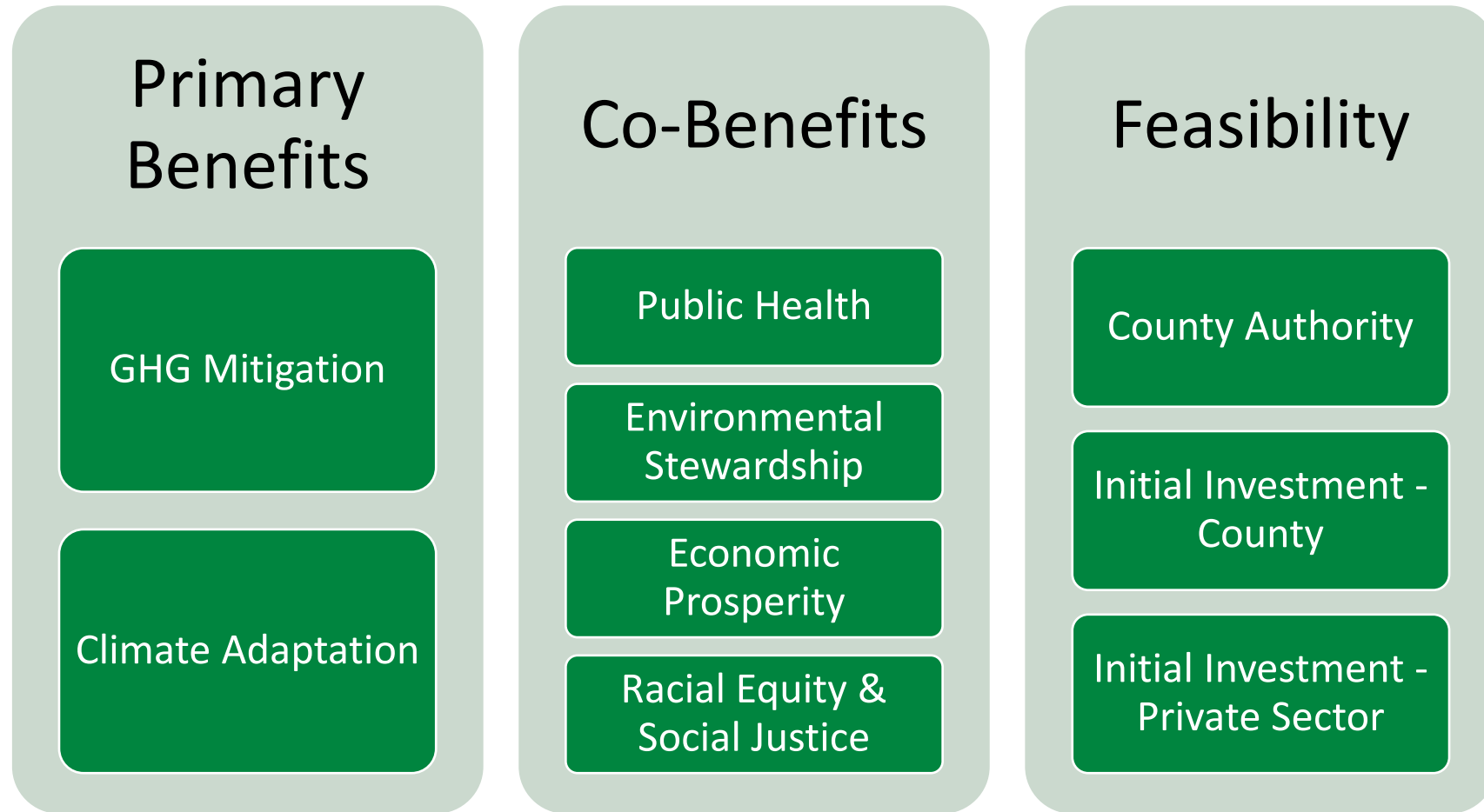


Climate  
Governance

# Climate Planning Considerations – Who should be involved?



# Climate Planning Considerations – Approach to Analysis



# Public Engagement during the Climate Planning Process

**176** Technical Climate Workgroup members

**30** Workgroup Meetings

**2** Racial Equity and Social Justice Workshops

**130** Community Conversations with Resilience Ambassadors

## ORGANIZATIONS PARTICIPATING IN THE CLIMATE PLANNING PROCESS:

**22** Environmental Conservation and Climate Groups

**20** Business

**10** Civil Rights and Religious Groups

**9** Education Groups

**8** County Advisory Groups

**7** Federal Agencies (Unofficial Presence) and International Organizations

**7** Adaptation, Resilience and Energy Associations

**4** Utilities

**5** Budget, Finance, and Philanthropic Groups

**4** Municipalities and Municipal Advisory Groups

**3** Chambers of Commerce

**2** Public Health Groups

**2** Transportation Groups

**1** Buildings Group

**1** Environmental Justice Group

# Climate Planning Workgroups

Clean Energy

Buildings

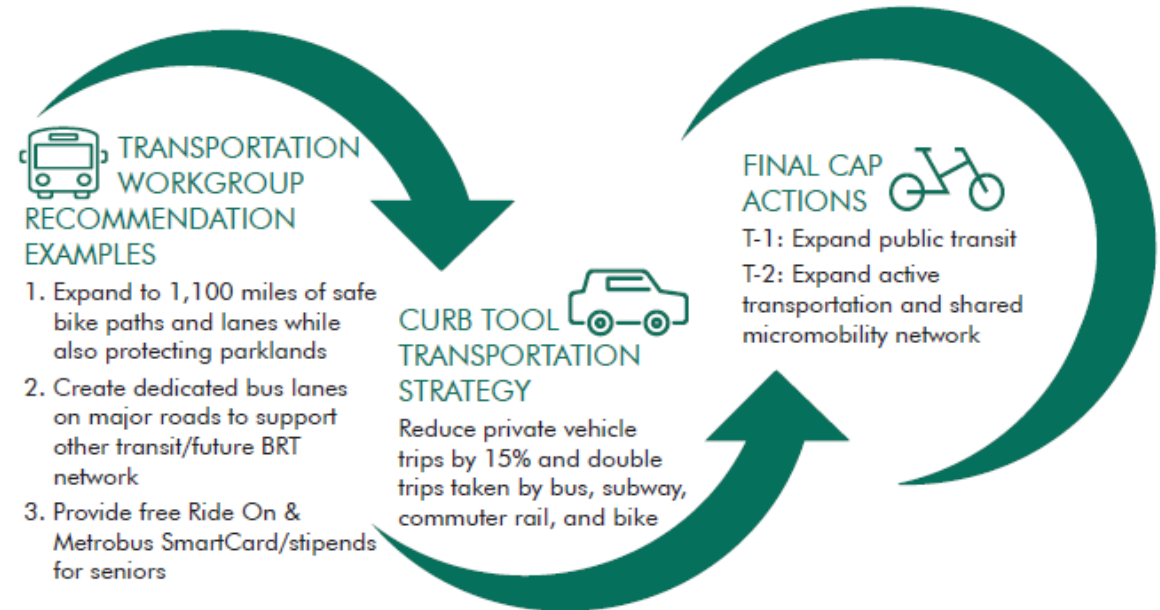
Transportation

Climate Adaptation  
and Carbon  
Sequestration

Public Engagement  
and Education

**894 Recommendations!**

# From Workgroup Recommendations to Climate Plan Actions



Area	# of Actions
Clean Energy	5
Buildings	7
Transportation	13
Carbon Sequestration	6
Climate Adaptation	20
Climate Governance	16
Public Engagement	20
TOTAL	87

# News from the Draft Climate Action Plan



- Natural gas will be banned
- All new buildings must be net zero
- Cars will be limited in urban areas
- Some roads will have tolls to reduce their use
- The County will buy flood-prone properties

- Stan Edwards
- [stan.Edwards@montgomerycountymd.gov](mailto:stan.Edwards@montgomerycountymd.gov)
- 240-777-7748

